

STAMPING CAPABILITIES

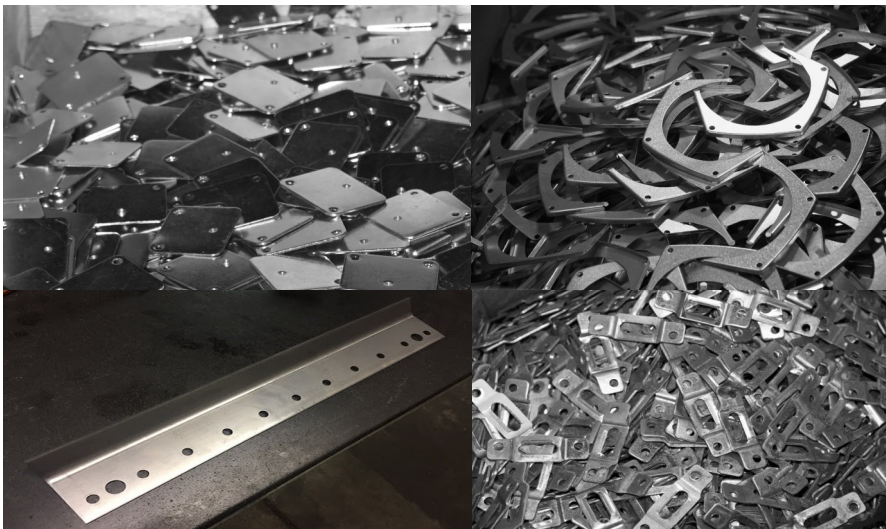
US Metal Crafters offers metal stamping services to companies throughout the United States and North America. Our stamping services are custom designed and configured based on customer needs and specifications.

To support custom designs and ensure rapid delivery, USMC has a fully equipped internal tool and die shop that includes EDM capabilities.

With world class capabilities, quick lead times, and responsive customer service, US Metal Crafters is your source for short and long production runs.

SPECIFICATIONS

- Single & Progressive Dies
- 65 Presses Up to 200 Tons
 - 15 Set Up For Auto Runs
- Air & Servo Feeds Up to 18" Wide
- Multiple Coil Lines/
Straighteners
- 28G to 1/4" Mild Steel



GET IN TOUCH

- info@us-metalcrafters.com
- 336-861-2100
- 2400 Shore Street,
Archdale, NC 27263
- us-metalcrafters.com
- Follow us on LinkedIn
for more

ROLL FORMING CAPABILITIES

US Metal Crafters' large capacity roll forming mills and 7 in-line presses provide customers with flexibility. Presses and Mills can be configured to achieve the desired production environment. Our in-house tool and die shop can provide tooling to produce simple profiles or more complicated shapes.

USMC offers roll forming in a wide variety of materials, including mild and high strength steel, PVC coated steel, aluminum, and copper.

We can accommodate up to 8 gauge material thicknesses (0.1644"-4.2mm).

SPECIFICATIONS

- 1" Shaft- 8 Stands
- 2.5" Shaft- 16 Stands
- 14" Wide- 14ga
- 12" Wide- 8ga
- Light to Heavy Weights of Various Materials
- Short to VERY Long Parts
- Up to 7 In-Line Stamping Stations
- Flying Cut-Offs for Fast Production



GET IN TOUCH

- info@us-metalcrafters.com
- 336-861-2100
- 2400 Shore Street,
Archdale, NC 27263
- us-metalcrafters.com
- Follow us on LinkedIn
for more

LASER CUTTING + FORMING CAPABILITIES

Need parts now? USMC's fiber lasers ensure fast turnaround and clean & accurate cuts in a wide variety of metals.

Our fiber lasers excel at cutting, engraving, and boring metals. Our new Mazak Optiplex Champion fiber lasers are a great option for high-volume production of parts in thin to mid-thickness materials.

Our forming process is further enhanced with our automatic press brake which allows for rapid set-up and increased production efficiency.

SPECIFICATIONS

- Mazak 3000 Watt & 8000 Watt Fiber Lasers
- Automatic SafanDarley CNC Press Brake
- Rapid Set-up
- Reduced Number of Production Steps



GET IN TOUCH

- info@us-metalcrafters.com
- 336-861-2100
- 2400 Shore Street,
Archdale, NC 27263
- us-metalcrafters.com
- Follow us on LinkedIn
for more

FABRICATION & ASSEMBLY CAPABILITIES

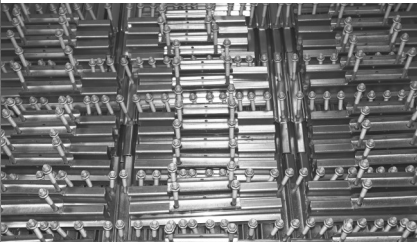
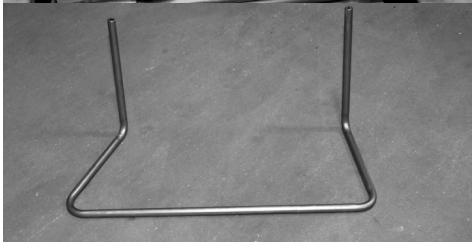
US Metal Crafters offers a wide range of cutting, shaping, and joining capabilities. Our experience runs the gambit. We routinely fabricate metal cabinets, chassis, as well as countless other flat and formed sheet metal parts and assemblies used in consumer products and industrial applications.

Our broad capabilities enable us to tackle assemblies that require multiple manufacturing processes.

Assemblies are joined by welding or other mechanical methods. From prototype to production quantities, you can rely on USMC's equipment, expertise, and capacity to deliver your parts on time and on budget.

SPECIFICATIONS

- 65 Stamping Presses
 - 40-175 Tons
- 2 Trumpf Turret Punches
 - Up to 28 Tons
- 5 Tube Benders up to 3"
- 6 Press Brakes up to 175 Tons
- MIG/TIG Welding
- In-House Wet Paint Line
- Powder Coating Available



GET IN TOUCH

- info@us-metalcrafters.com
- 336-861-2100
- 2400 Shore Street,
Archdale, NC 27263
- us-metalcrafters.com
- Follow us on LinkedIn
for more

TOOL & DIE FORMING SHOP

With one of the most complete tool & die shops in the southeast, US Metal Crafters is able to serve your tool and die needs from design to life-long maintenance.

- Durable high-precision tools
- Progressive, transfer, line, tandem, or blanking dies
- Die validation process guarantees the final product meets specifications
- Reliable tooling reduces downtime and maximizes production efficiencies

KEY MACHINERY

- Mitsubishi MX2400V EDM
- 2-Engine Lathes
- 2-CNC Turning Mills
- 2-CNC Lathes
- 3-Surface Grinders
- 2-Bridgeport Mills



GET IN TOUCH

- info@us-metalcrafters.com
- 336-861-2100
- 2400 Shore Street,
Archdale, NC 27263
- us-metalcrafters.com
- Follow us on LinkedIn
for more

SAMPLE PRODUCTION

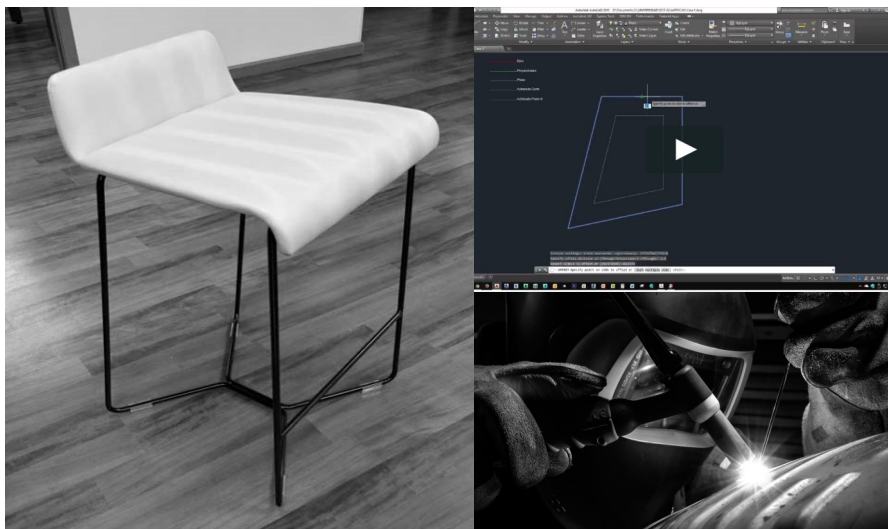
New idea? New product? Wish you had your own sample shop?

Let us partner with you to develop a fully vetted sample that ensures full production accuracy.

- Eliminate those nagging post-production adjustments.
- Leverage our expertise in project management and design
- Access our top level equipment and software
- Control your budget

KEY FEATURES

- Dedicated Prototype Engineer
- Tool & Die Shop
- Laser Cutting & Forming
- Autocad 2020 (CAD),
Fusion 360 (CAD/CAM/CAE),
Metacam (CAD/CAM),
Profil (CAD),
Radan (CAD/CAM)



GET IN TOUCH

- info@us-metalcrafters.com
- 336-861-2100
- 2400 Shore Street,
Archdale, NC 27263
- us-metalcrafters.com
- Follow us on LinkedIn
for more

ADVANCED PLANAR INSPECTION

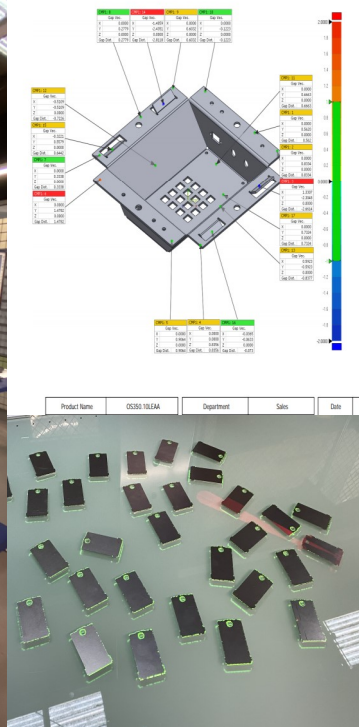
Leading the Way in Quality Assurance.

Our 3D Optic and Planar Inspection System utilizes world renowned QA technology.

- Accurately measure surfaces and edges in 3D
- QA issues identified through single click inspection
- Instant product quality verification, reverse engineering capabilities, & comprehensive report generation

KEY FEATURES

- 3D Inspection
- Reverse Engineering
- Can measure surfaces & edges in 3D
- 40 million measurements in 0.1 seconds
- CAD comparison



GET IN TOUCH

- info@us-metalcrafters.com
- 336-861-2100
- 2400 Shore Street, Archdale, NC 27263
- us-metalcrafters.com
- Follow us on LinkedIn for more